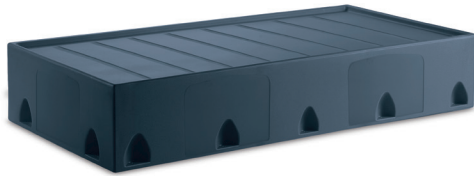


## SPECIFICATIONS



### Model

ATN101

### Weight

110-115 lbs

Note: Dimensional tolerances are +1% due to manufacturing process.

\*Intended for indoor use only

### Dimensions

Bed Deck Length 82"

Bed Deck Width 38"

Height 15.5"

Overall Length 84"

Overall Width 40"

### Recommended Mattress

38"x82"



## DETAILS

### Finishes

See Design Guide for finish options.

\*Due to differences in monitors, printers and materials, actual product colors may vary. Color chips are available for more accurate depiction of color.

### Options

ATN101B: Free-standing Bed with Fully Enclosed Bottom

ATN103: No Mounting Holes

ATN103B: Free-standing Bed with Fully Enclosed Bottom and no Mounting Holes

### Assembly

None required

### Patents

This product may be covered by US Patent Nos. US 8,007,059 B2 and US 10,507,150 B2.

### Accessories

Removable Restraint Rings, Enclosure Kit

ATN102-K: Riser

ATN110: Headboard

ATN-G103: Glides

### Fabrication & Material

Slightly textured maintenance free surface allows for easy cleaning. Rotationally molded, anti-ligature, specially formulated, high-impact polyethylene with ultraviolet light stabilizers (to reduce fading). Chemically resistant to blood, vinegar, urine, feces, salt solution and chlorine solution. Anti-ligature design with no internal openings. Premium TruColor™ polymer is fully compounded for superior color consistency and durability. Unit is filled with rigid polyurethane foam for increased durability and sound absorption. Made in the U.S.A.

### Installation

Wedge anchors and 3/8" bolts required for permanently attaching to the floor. Anchors and bolts not supplied by Norix. Groove along underside edge for caulk application (caulk not supplied by Norix).

### Warranty

10 year limited replacement warranty. Norix recommends products placed in storage prior to installation should be held in a climate controlled area similar to the room where the product will be used. Norix also recommends that any Attenda® products shipped via ocean container maintain a temperature of 70-75°F with a Relative Humidity of 35%.

### Maintenance

For routine and regular cleaning maintenance, Norix recommends the use of Simple Green® or an equivalent cleaning product. Attenda® products are bleach/water solution cleanable and suitable for use with hospital-grade disinfectants (such as Virex®, Wexcide® or Oxivir Five 16®) per manufacturers' instructions.

## TESTING

### Performance Test Standards

Product tested to 1,000 lbs static load

### Environmental Test Standards

GREENGUARD and GREENGUARD Gold Certified by UL Environment. Product certified for low chemical emissions to UL 2818. UL.COM/GG.

### Flammability Test Standards

Compliant with the following flammability standards:

- State of California, Technical Bulletin No. 133, Flammability Test Procedure for Seating Furniture for Use in Public Occupancies
- State of California, Technical Bulletin No. 117, Flammability Test Procedure for Seating Furniture for Use in Public Occupancies
- UL1056 Fire Test of Upholstered Furniture
- ASTM E1537 Test Method for Fire Testing of Real Scale Upholstered Furniture Items
- NFPA 261 Cigarette Ignition Resistance of Upholstered Furniture